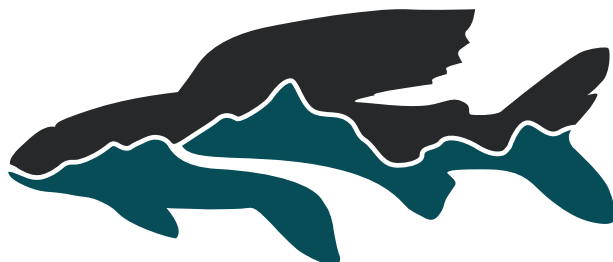


Free Flows

A Quarterly Publication



**BIG HOLE RIVER
FOUNDATION**

The Big Hole River Foundation's mission is to conserve, enhance and protect the free-flowing character of the Big Hole River, its unique culture, fish and wildlife.

Summer 2013

This Issue

Dinner Invitation
New Board President
Big Hole River Day
Challenge Grant
Volunteers in the Big Hole
Swamp Creek Siphon Project
Hoot-Owl Fishing Closures
Birding Along the Big Hole
Kid's Day News & Photos
Hyde Drift Boat Raffle
Freeflow Rod and Reel

25th Anniversary

Upcoming Events

25th Anniversary
Celebration
2013

Big Hole River Day
Melrose - July 20

Annual Fund Raising
Dinner & Auction
Melrose - July 20

Dear Friends of the Foundation

*The Big Hole River Foundation cordially invites you
to celebrate our 25th anniversary at our
Annual Fundraising Dinner on
Saturday, July 20th
at the firemen's hall in Melrose, Montana.*

*The evening will begin at 5 PM with music by
Mountain Moongrass Band
followed by dinner at 6:30 and live auction at 7:30.
The highlights of the evening will be the Sweetgrass Rods bamboo fly rod
and Bozeman Reel fly reel combo live auction item and the drawing for
the Hyde Drift Boat.*

*Dinner includes BBQ roast pork with all the trimmings
by Ray Weaver and the Hitchin' Post Restaurant
and wine courtesy of Salvestrin Winery of Napa Valley.*

Tickets are \$25 each - Please RSVP by July 15th

Call 866-533-2473

Email bhrf@bhrf.org

BHRF, PO Box 3894, Butte, MT 59702

On-line at www.bhrf.org Events

*Your support of our mission
is deeply appreciated.*

*Big Hole River Day on July 20th is an all-day event with pancake
breakfast, vendors, craftspeople, music, kid's events and more.
Come early.*



Board of Directors

Officers

Tom Welsch - President
Wade Fellin - Secretary
Hans Humbert - Vice President
Joe McBride - Treasurer

Members

Chuck Bulen
Ray Weaver
Sheila Youngblood

Staff

Executive Director
Michael A. Bias, PhD
1.406.925.2276
mike@bhrf.org

Operations Manager
Corky Logan
1.866.533.2473
bhrf@bhrf.org

Phone

1.866.533.BHRF (2473)
Mail
PO Box 3894
Butte, MT 59702

Internet

www.bhrf.org

EMail

Operations bhrf@bhrf.org
BOD pres@bhrf.org
Exec. Dir. mike@bhrf.org

Facebook

Big Hole River Foundation

President's Message

It's tough to follow Steve Parker as President, but I'm honored to have the opportunity. Like so many of the Foundation's past presidents, Steve moved the organization forward in significant and subtle ways. He left us much better off financially than when he assumed office and he left a record of specific accomplishments, many of which are mentioned in Mike Bias's Executive Director's report on page 3 of this issue. He encouraged the staff to develop professionally and strengthened the Foundation's standing in the scientific community and with the residents of the Big Hole valley. We, and the Foundation, owe him our gratitude.

Going forward, I want to improve the structure of our longer range planning and our program selection and implementation. We have become very good at individual projects such as the fencing program, Kid's Day, and the macroinvertebrate study to mention only a few, but the River would benefit, I think, if we had a more detailed idea of where we want to go. We need to know what exactly it is that we are to 'conserve, enhance and protect' about the free-flowing character of the River and its unique culture, fishery, and wildlife, in order to fulfill our mission. I am confident the Board will agree that formalizing our program planning and fundraising efforts will benefit our work.

It seems the first step in the process is to describe the River and its culture, fishery and wildlife, at least as of 1988 when George Grant established the Foundation, so that we have both a goal to ensure our program efforts are on task, and a baseline against which to evaluate changes in the River's environment, both good and bad, over times past and into the future. The objective is to build a knowledge base that will allow us to identify correlations and cause-effect relationships, where possible, to guide our project planning.

One of the commonly accepted concerns, for instance, is that the Salmon Fly hatch is dramatically smaller now than was the case historically. Dick Oswald, who until he retired a few years ago was the Fish, Wildlife and Parks fisheries biologist for the River, recently explained to Mike Bias and me that one of the factors affecting the apparent decline in the Salmon Fly hatch may be a reduction in the number of cottonwood trees along the River. Cottonwood leaves are a staple of the Salmon Fly nymph's diet. If sampling data indicate there has been a decline in the flies, and if analysis of available aerial photography for the last several decades indicates a significant decline in the number of cottonwoods in the riparian zone, perhaps further analysis of that possible correlation would be warranted. The results of such an analysis may in turn indicate a need to identify management options for increasing the number and survival rate of cottonwoods along the River.

A major component of the first step of the description process will be to settle on a year, or perhaps a several year span, to use as a baseline. The availability of data may dictate the baseline, but it seems we should explore whether to settle on some point in the late 1960s or early 1970s, well before the dramatic increase in mechanized ranching, before the introduction of center-pivot irrigation, and before fly fishing became virtually a way of life. In short, it seems the baseline should perhaps be somewhere around 1973, when George Grant began writing and publishing his concerns about the River in *The River Rat*, then the newsletter of Montana Trout Unlimited.

see President's Message Page 4

Executive Director's Message

Dear Friends,

As I write this, salmon flies are from East Bank to Silver Bridge, golden stones are popping, sallies are out, and I have already seen green drakes! It seems like we went from winter to summer in one day. Wow, we have been busy though, where to start?

We successfully met the Foothills Foundation's progressive challenge to raise a total of \$35,000 before July 1st. What a great accomplishment. Thank you all.

There are some perspective projects on the horizon: a new fence project in the upper Big Hole, a new cottonwood restoration project along the middle Big Hole and we are detailing the specifics needed for a quantitative look at what the Big Hole was like in the past to provide direction on where the Foundation needs to focus its future efforts.

The Big Hole River Foundation reached an agreement with the Anaconda Sportsman's Club to manage and maintain their boat access site on the upper Big Hole. We will use the Chris Winter memorial funds to grade and gravel the entry and parking area and recontour the boat launch. We're working with the Boy Scouts to provide picnic tables at the site. As the salmon fly hatch progress upriver, this site becomes increasingly popular with outfitters, public anglers, and floaters.

Under our newly-signed funding agreement with the Arctic Grayling Recovery Program, the Board agreed to fund \$2,500 towards the Swamp Creek Siphon Project. This project will install a 150-foot siphon that will transfer irrigation flow under Swamp Creek, an important Arctic grayling tributary. We look forward to helping the Fish and Wildlife Service, Fish, Wildlife & Parks, and landowners to conserve Arctic grayling throughout the *Last, Best River* for years to come.

Analysis began on the benthic macroinvertebrate samples collected during April and July sampling begins soon. We'll also be sampling adult mayflies this summer to see if we can identify the two new species encountered last year. We are working with Jim Olsen of Fish, Wildlife & Parks to refine their analysis of the fish tagging data. They summarized and conducted descriptive statistics for the three-year fish growth and movement study. We are planning on looking more closely at survivorship.

We are in the midst of preparing for this year's *Big Hole Hole River Day* in Melrose. We have this year's model of the Hyde Rocky Mountain Skiff sporting our new logo polished and ready to give away. The beautiful Sweetgrass Rods special-edition *Freeflow* is ready and waiting for its matching Bozeman Reel SC Series to be awarded to the highest bidder. I recently met with Ennis artists Bern Sundell and his wife Lexi and both are offering something special for this year's *Big Hole River Day*. Bern has a tremendous love for the Big Hole River. Ray Weaver is fattening the pig and the Mountain Moongrass Band is practicing. I am psyched for this year's event.

As excited as we are, I worry about river flows through summer and into fall. This cold, wet spring has helped remaining snowpack and river flows tremendously. Although this year's Drought Management Plan is revised and ready-to-go, I'm hoping we don't need to put it into play. So far the river's holding its own and compared to other rivers in the area, doing a bit better. Let's hope it remains that way the rest of the year.

Thank you all for your generous support and we are looking forward to seeing you at this year's *Big Hole River Day*!

Respectfully,

Mike

Thank You

We are grateful for the following members and donors who have renewed or made recent contributions and gifts in support of our mission as of June 21, 2013

Every effort has been made to maintain accuracy. If we have made any errors, please call 866.533.2473 or Email to bhrf@bhrf.org.

Challenge Donations

Robert Tranquada * Robert & Holly Asmuth * William Stover Jr.
Michael & Julie * Art Bivins * Robert Saffle * Sanuel J. Rogers
Ronald G. Fick * Lorry Thomas * Anonymous * The Cinnabar
Foundation * Dee Motor Company * Hal Fick
Charles Schultz * William Stover * Bill & Andrea Nelson
Nicholas & Christine Evans * John & Judy Jacobson
Scotty & Deborah Smith * Thomas Ryan * Doug & Kathie Raff
Robert Nordquist * Finis St. John * Joseph & Anne Shands
Bucher Family Trust, Larry & Terry Bucher
Donald & Jacquelyn Brown * Larry Best * Dennis Dietl
Michael & Elaine Moore * Bill Tait * Ray Weaver * Tom Welsch
Laurie Kirk * Steven & Kerstin Clark * Jeff & Kim Montag
Draper Family Foundation Fund * Joy Driggers * Dee Fenner &
Charles Moss * Donald & Diane Sherman * Stephen Beaton

Memorials

Terry & Debra Ressler in memory of Tom Harman
Michael Anderson in memory of Christopher Winter
Angus McPhee in memory of William 'Bill' Geary. Semper Fi
Ruthie Family Fund in honor of Ralph & Jessie Potts, Walter &
Ruth Gnose, Jim Gnose & Leona Munson

Sponsorships

Sportsman Motel, Cabins & RV
First Montana Bank
Headwaters Fly Shop
Sportswear & Design

Life Membership

Dennis Rehse
Jack Holland

Pintler

Jim Harrison
Andrew Suenram

Maiden Rock

Per Brandin
Scott Ferris

Free Flows

Gregory Horsfield
Robert Gibson
Ruth Dockins
Holley & Laura Britt
Paul Vang
Bill Dee, Dee Motor Co.
Dennis Dietl

Kid's Day

Tom Harman Estate
Great Harvest Franchising, Inc.
Dillon Animal Hospital
Steel's Furniture
Farm Bureau Financial Services

President's Message from Page 2

The second stage of the description process will be to identify and collect all pertinent data concerning the character of the River and its unique fishery, together with data on the culture and wildlife of the valley. If we elect to proceed with the project we will begin the data collection process as quickly as possible to ensure that no data are lost to the passage of time. I'll be refining the project proposal for presentation to the Board in the next few months. My hope is that over the next decade the Foundation will strengthen its position as *the* source of sound, reliable science on the River and its environment.

We are always interested in your thoughts about the River or our plans for the Foundation's work. Contact us with your comments and ideas on this proposed project, and any other topic as well at bhrf@bhrf.org.

Become involved so we can move forward together.

Tom Welsch

Tom Welsch Takes the Helm of Big Hole River Foundation

On April 10, 2013 the Board of Directors of the Big Hole River Foundation elected a new president, Tom Welsch, of Butte.



Tom has a long standing interest in the Big Hole River and previously served on the board from 1998 to 2003 and returned as a director in fall of 2011. Tom holds a BS in Forestry and an MS in Forest Hydrology. He worked for the U.S. Corps of Engineers in recreation management and planning, the U.S. Forest Service in state and private forestry before attending law school, graduating in 1981. Tom practiced law with Poor, Roth & Robinson, PC in Butte from 1986 to 2011 when he retired.

Tom has been a driving force with the Foundation and has headed up the popular "Kid's Day on the Big Hole" event held the first Saturday in May each year at the Meriwether Ranch in Melrose. He also orchestrated the Foundation's first annual "Fly Gear Swap", which was held at the Butte Plaza Mall in April.

Tom replaces Steve Parker who retired as President of the board in April. Steve joined the board in fall of 2005 and became President of the board in winter of 2008. The Board and Staff of the Big Hole River Foundation wish Steve the best in his future endeavors and welcome Tom as their new leader.

Come Celebrate our 25th Anniversary!

Big Hole River Day

July 20, 2013 in Melrose, MT

Live Music ~ Vendors ~ Children's Activities

Casting Competition ~ Fly Tying Demos ~ Drift Boats

Auctions ~ Raffles ~ BBQ Pig Roast

Big Hole River Day is an all-day event sponsored by the Big Hole River Foundation and the Town of Melrose.

The day begins with a pancake breakfast by the 4-H Club at the Hitchin' Post Restaurant from 8 AM to 11 AM. Vendor and craft booths are open from 11 AM to 5 PM.

Live music by Mountain Moongrass Band begins at 4:30 PM

and the BBQ pig roast is at 6:30 PM followed by

live and silent auctions and the drawing for the Hyde Rocky Mountain Skiff drift boat.

Events during the day are open to the public at no charge. Tickets for the BBQ can be purchased for \$25 on our website at www.bhrf.org and by clicking on the events tab.

Progressive Fund-Raising Challenge Achieved By Mike Bias

Last November, we wrote to you detailing the Foothills Foundation's dollar-for-dollar challenge to us to raise \$25,000 by the end of 2012. You, our Board of Directors, and our staff responded generously raising a bit over the targeted \$25,000 in cash and pledges satisfying their initial challenge. The timely fashion in which we met that goal triggered a progressive challenge from the Foothills Foundation. If we raise an additional \$10,000 by the end of June, they will match that amount as well. This grant effectively doubles every donated dollar until our new goal of \$35,000 is met, assuming we could accomplish that by the end of June.

We sent a pledge letter in May asking for your help and many of you have contrib-

uted, moving us closer towards fulfilling this new challenge. We pleaded that we would not meet the deadline without your generous support. The additional \$10,000 at stake amounts to about 20% of next year's budget, and we've got big projects planned. In addition to our ongoing research initiatives, we will complete the Moose Creek fencing project, provide funds for grayling conservation projects in the upper Big Hole, conserve additional westslope cutthroat habitat, and, ideally, get a good start on the Pennington Bridge bank stabilization project. We are also vetting a new research effort to historically describe and quantify the physical and biological characteristics of the River and the valley when they were in a more pristine condition - compiling a timeline of change in water

conditions and land management patterns that affected the pristine condition. Information garnered from this research effort will guide Foundation planning and future projects better allowing us to *"conserve, enhance and protect the free-flowing character of the Big Hole River, its unique culture, fish and wildlife."*

Well, as of the end of the second week of June, we met and exceeded the Foothills Foundation's progressive \$10K fund-raising challenge at an astounding \$11,725! Thank you, thank you, thank you for your continuing support of the Foundation and the *Last, Best River*. We knew we could count on you to help us meet this latest challenge opportunity.

Other Foundation Volunteers Help with Big Hole Events

By Laura Britt



Dick Talley giving instruction on shooting BB gun

For the past several years, the volunteers of the Southwest Montana (Butte) Chapter of the Rocky Mountain Elk Foundation have participated in several local activities besides their annual Big Game Banquet in April. While these activities do not earn funds for the RMEF, they have provided a way for committee members to reach out to non-members and other organizations in the area including the Big Hole River Foundation.

Over the past four years, the RMEF volunteers have served hot cocoa to the kids and coffee to the adults attending the annual Kid's Day on the Big Hole event. They hand out goodies and visit with the children about elk and habitat conservation. They

also provide a wall tent with a heater in case any of the children get cold or wet during the event.

On Saturday, June 16, 2012 the committee members and other volunteers met at Sawmill Gulch between Divide and Dewey for a fence pull. The energetic group tore down over a mile and a half of fence impeding migration of elk and other wildlife in the area.

The committee's last summer activity in 2012 was Big Hole River Day in Melrose on July 21, 2012. In addition to giving out mugs, cardboard elk antlers and face tattoos to the kids, the committee also was able to borrow the S.A.F.E. Shooting Booth from RMEF headquarters in Missoula. About 25 youngsters were instructed in safe firearm handling and given the opportunity to shoot a BB gun at targets inside the shooting lanes of the booth. Many of these kids had never handled a BB gun before, and they were all very proud of their accomplishment. And, over the past several years, the committee's chairman, Dick Talley who works for Dowl HKM in Butte has given tours of the new dam and pump house they engineered at Divide for attendees at Big Hole River Day.

The involvement of the RMEF committee members in Big Hole River Foundation events and projects is sincerely appreciated and we look forward to seeing them and their S.A.F.E. shooting booth again this year at the Big Hole River Day on July 20th. Thank You!



RMEF volunteers pulling fence in Sawmill Gulch

Foundation to Help Fund Swamp Creek Siphon Project

By Mike Bias

Under our newly-signed funding agreement with the Arctic Grayling Recovery Program, the Board of Directors approved contributing \$2,500 towards the Swamp Creek Siphon Project. This project will install a 150-foot siphon that will transfer irrigation flow under Swamp Creek, an important Arctic grayling tributary. Currently the Spokane irrigation canal captures Swamp Creek and impedes fish movement, and access to upper or lower portions of Swamp Creek is interrupted by the canal. The project will also require installing an irrigation diversion structure on Swamp Creek so adjacent landowners can utilize their water right from Swamp Creek. This project is part of landowner's Candidate Conservation Agreement with Assurances (CCAA) site-specific conservation plan developed to improve limiting habitats for Arctic grayling in the upper Big Hole. Specifically, this project will provide fish passage in Swamp Creek over the Spokane irrigation system and improve the ability to manage flows diverted from Swamp Creek for irrigation.

We are excited for the opportunity to contribute towards important grayling conservation projects like the Swamp Creek Siphon Project. We look forward to helping the Fish and Wildlife Service, Fish, Wildlife & Parks, and landowners conserve Arctic grayling throughout the Last, Best River for years to come.

2013 Version of Drought Plan Incorporates “Hoot-Owl” Closures By Mike Bias

During 2013 the Big Hole River Drought Management Plan (DMP) incorporated for the first time “Hoot-owl” fishing restrictions. Within each reach, hoot-owl fishing restrictions will be in place when daily maximum water temperature reaches or exceeds 73° F (23° C) for at least some period of time during three consecutive days. Hoot-owl fishing closure prohibits fishing between the hours of 2:00 p.m. and 12:00 a.m. (Midnight). They will remain in place until September 15 or until re-opening criteria are met. Also, river closure based on water temperature may be implemented if hoot-owl restrictions are inadequate to protect the fishery e.g., prolonged period where water temperatures exceed 73° F and forecasts are not favorable for cooler temperature, thermal stress in fish observed by biologist, etc. A particular reach may be closed to fishing and remain in effect until September 15 or until re-opening criteria are met. Re-opening criteria generally consist of water temperatures at a particular reach’s thermograph being less than 70° F for three consecutive days.

Montana Department of Fish, Wildlife & Parks Fisheries Program’s mission is to preserve, maintain, and enhance aquatic species and their ecosystems to meet

the public’s demand for recreational opportunities and stewardship of aquatic wildlife. To ensure that fisheries are protected under critical drought conditions, the state of Montana adopted a set of criteria to guide fishing closure and re-opening decisions. The State’s policy allows that on some streams, watershed groups composed of local agricultural, conservation, business, and angler interests can develop individualized drought plans to address site-specific stream flow and fishery issues. These drought plans control drought-related actions in the waters covered by them.

The Big Hole River DMP is far more comprehensive than just restricting fishing. Its purpose is to mitigate the effects of low stream flows and lethal water temperatures on fisheries (particularly fluvial Arctic grayling) through voluntary efforts between all water users, including agricultural users, municipalities, businesses, conservation groups, anglers, and affected government agencies. The Big Hole River DMP was developed and adopted by members of the Big Hole Watershed Committee, including representatives of the Big Hole River Foundation, ranchers, and outfitters together with input from agencies.

The DMP is an adaptive management plan that can be modified based on the lessons learned from research projects, increased information from new river gages, and from the experience gained through implementation of the plan itself. The DMP is reviewed, modified if necessary, and adopted by the Big Hole Watershed Committee each January.

The DMP separates the Big Hole River into five reaches, each reach having a series of stages at which various management actions are implemented. At the uppermost reach, Headwaters to the confluence with the North Fork, management actions occur when flow targets hit 160, 60, 40, and 20 cubic feet per second (cfs). At the reach between the confluence with the North Fork and Dickie Bridge, management actions occur when flow targets hit 100, 80, and 60 cfs. Throughout the two reaches between Dickie Bridge and Melrose Bridge and Melrose Bridge and the Notch Bottom Fishing Access Site management actions occur when flow targets hit 250, 200, and 150 cfs. At the lowest reach, Notch Bottom to the Jefferson River management actions occur when flow targets hit 200, 150, and 100 cfs.

Birding along the Big Hole By Steve Parker

This year’s annual birding trip through the Big Hole on June 8th identified a total of 88 species. The trip started early in the morning at Twin Bridges following the river all the way to Wisdom and dinner at the Big Hole Crossing. After dinner the route took us down the Lower North Fork Road to catch some evening birding. The count almost tied last year’s 90 species but no new species were identified during this year’s event.

Please consider a donation/pledge to the Foundation to support our activities and the efforts made on this year’s birding trip. Consider joining us next year for this fun trip. It’s a great way to see a lot of the Big Hole wildlife and scenery.



Tom Harman's Estate Supports Kid's Day for Years to Come By Mike Bias

Many of you know that Tom Harman passed away unexpectedly last August. Tom was an awesome tyer of the famous George Grant flies that became an icon for the Big Hole River. In fact, Tom even used the George Grant style fly for his logo and famous Harman's Fly Shop stickers. He provided us with the unique Big Hole River Foundation logoed creeper.

Tom was also a great supporter and cheerleader for *Kid's Day on the Big Hole* and was one of the original organizers of that event "back in the day". Tom's estate made a huge donation to *Kid's Day on the Big Hole* this year. The generous donation consisted of a cash gift, 10 rods, 9 reels, and over \$3,000 worth of flylines, leaders and tippets – that's a lot of lines.

Much of Tom's donated equipment was used by the children attending this year's *Kid's Day*. Several of the new rods and reels were used as prizes at the end of the event. Many of the new lines, tippets, and leaders were handed out to the children as well. We reserved several of the nicer rod and reel com-

binations to be auctioned at a special silent auction in Tom's name to support *Kid's Day* at our annual Big Hole River Day celebration and dinner in Melrose on July 20th this year. He gave us enough rods to have this special *Kid's Day* silent auction for several years to come.

Tom was the catalyst responsible for Abel building our Grayling Conservation Reel in 2010. Tom was floating with Skip Gibson, rep for Abel Reels, when they came up with the idea for a grayling reel. We worked together and Abel produced the reel that year. This special edition reel and artist's print was limited to a production run of 100 reels. Abel donated reel numbers one and two to us to be used as fund-raisers. We raffled the reels matched with a Sweetgrass bamboo rod during 2011 and a Scott rod the next year.

We thank Tom's estate for the incredibly generous donation. Tom loved the Big Hole River and was a great supporter of the Foundation. Both will miss him.

2013 Drift Boat Raffle

Our sponsor Hyde Drift Boats has again created a Big Hole River Foundation Special Edition "Rocky Mountain Skiff" for our raffle. Tickets are on sale now at area shops and from staff and board members. Drawing will take place at Big Hole River Day in Melrose on July 20th and winner need not be present to win.



If you would like to order tickets by mail, please fill out the form below, cut out and send to:

Big Hole River Foundation
PO Box 3894
Butte, MT 59702

Your tickets will be entered and a receipt will be sent to you. We appreciate your help in making this raffle a huge success. Thank you!!

Name: _____

Address: _____

Phone: _____ Qty: _____ Amount Enclosed: _____

Payment: Check ☐ Credit Card No: _____ Exp. Date: _____

Suggested Donation \$20 Each or 6 for \$100

Kid's Day on the Big Hole - May 4, 2013



Help save paper and printing costs by going green

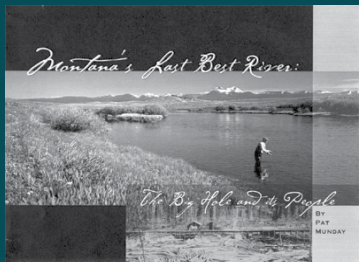
If you would prefer to receive our newsletter in digital PDF format only, please drop us an Email at bhrf@bhrf.org with the subject line
GO GREEN

And don't forget to sign up for our periodic on-line version of
Free Flows at www.bhrf.org

BHRF Merchandise

Books - The Big Hole River Foundation has books, tee shirts and hats for sale and all proceeds benefit the projects and programs of the Foundation. To order, please visit our website at www.bhrf.org or call us toll free at 866.533.BHRF or Email us at bhrf@bhrf.org and we will return your call.

Montana's Last Best River: The Big Hole and it's People by Pat Munday.
George Grant signed edition \$59.95
Dave Whitlock print edition \$49.95
+ S&H



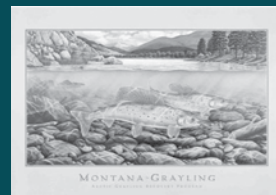
Books by George Grant
Grant's Riffle
Montana Trout Flies
The Art of Weaving Hair Hackles
\$20 each plus S&H
Ten Book Series - see website \$200



Columbia Fishing Shirts
Long Sleeve
in many sizes
and colors
\$50 + S&H



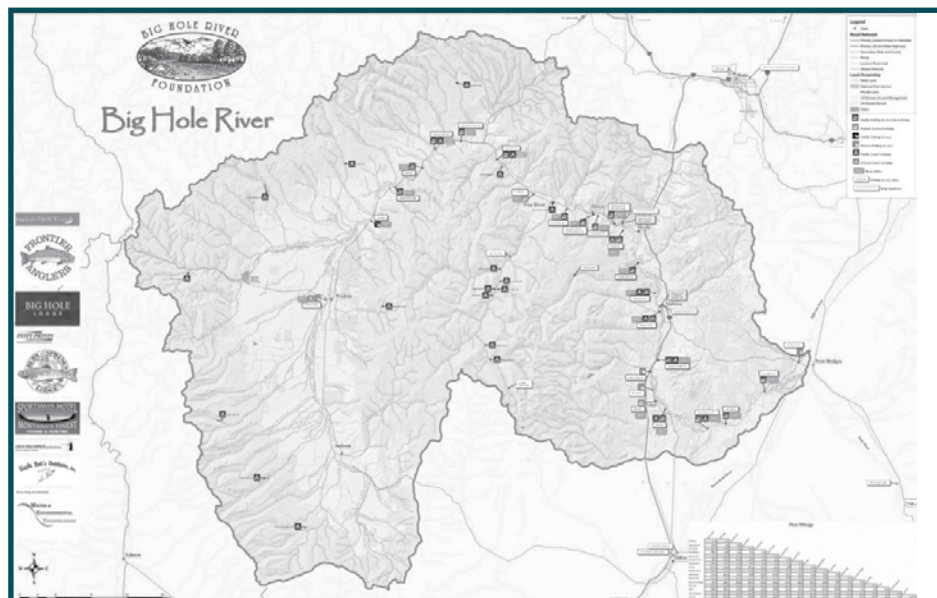
Montana artist, Monte Dolack's
"Montana Grayling" posters
These beautiful posters of
Arctic grayling are worthy of
fine framing
\$25 each plus S&H



New Logo Merchandise Available Now - Columbia long and short sleeve fishing shirts in many colors and sizes as well as new hats. Call for availability.


ALL REMAINING OLD LOGO STOCK IS NOW ON CLEARANCE SALE - HATS AND TEE SHIRTS ARE \$10 EACH

Big Hole River Maps
available in local
shops
or order on-line at
www.bhrf.org for
\$9.95 + S&H



Our Newsletter and Corporate Sponsors - Thank you!

Jane Birkhead, CPCU
Executive Vice President
Hukill Hazlett
Harrington Agency, Inc. 4601
Malsbary Road
Cincinnati, Ohio 45243



INSTY-PRINTS
BUSINESS PRINTING & DIGITAL SERVICES
of BUTTE

First Montana Bank
Putting Montanans First

Sportswear & Design
Dillon, Montana
facebook.com/SportswearAndDesign

HYDE
Drift Boats



BOZEMAN REEL



Big Hole River
HEADWATERS
Fly Shop
Melrose, MT



Sweetgrass Rods

The Completely Montana Freeflow Rod and Reel Package By Mike Bias

Early this year while the ground was still snow covered and the wood stove was going nonstop, I met with the Boo Boys at Sweetgrass Rods a couple of blocks from my house in Twin Bridges. I was asking them if they would make us a rod for our Big Hole River Day event and dinner in July, which seemed so far away. They readily agreed to furnish us with a special Big Hole River Foundation edition rod and call it the “Freeflow” after our newsletter title and the fact that the Big Hole is undammed.

Towards the end of that meeting, Dave Delisi, manager at Sweetgrass, asked what reel we were thinking about pairing with the hand-made, bamboo, special edition, Freeflow. I said I didn’t know, but I’d like something nice enough to match the rod and he wanted something with a classic look and feel. He suggested Bozeman Reel of Bozeman. We looked at their reels online – very nice, classy, high quality.



I contacted the guys at Bozeman Reel and they immediately replied of their interest to help us but weren’t beginning production until March. We kept in touch through the late winter and spring. During the first week of June I went to Bozeman to meet with Dan Rice, co-owner of Bozeman Reel. They agreed to provide us with an SC Series reel – a classic style reel perfect for the Freeflow. Bozeman Reel will be custom engraving our new logo on the reel and there’s a possibility of getting it in a custom-colored finish. They’re going to surprise us. The winner of the Freeflow and reel will have the option of having their name engraved on the reel as well.



After telling Tim Tollett, Frontier Anglers of Dillon, of the Sweetgrass Freeflow and matching Bozeman Reel’s SC Series, he said he’d throw in one of his custom Scientific Angler lines for the package. As a result, we now have a completely Montana rod and reel auction package for our Big Hole River Day event and dinner. You want to make sure you’re in Melrose on July 20th for Big Hole River Day and a chance to bid on this sweet rod and reel package. Thank you Sweetgrass Rods, Bozeman Reel, and Frontier Anglers!

Planning a fishing trip to the Big Hole this year?

Let the Big Hole River Foundation be your travel agent.

In conjunction with three of the finest lodges outfitting on the Big Hole River, the Big Hole River Foundation put together three amazing fly-fishing vacation packages available to you for your generous contribution to the Big Hole River Foundation. For a \$5,000 contribution you will receive a 4 night/3 day guided fishing package for two at Healing Waters Lodge and a lifetime membership to BHRF. For a \$7,000 contribution you will receive a 4 night/3 day guided fishing package for two at Ruby Springs Lodge and a lifetime membership to BHRF. And, for an \$8,000 contribution you will receive a 6 night/5 day guided fishing package for two at Craig Fellin’s Big Hole Lodge and a lifetime membership to BHRF. The trip to Big Hole Lodge also includes tips, flies, wine and beer.

Guided fishing packages are good for one-year and subject to available openings at the respective lodges. Help support the important programs and projects of the Big Hole River Foundation, while doing what you planned on doing anyway – fishing the Big Hole River. For more information contact Mike Bias at mike@bhrf.org or (406) 925-2276.



U.S. Postage
PAID
Non-Profit
Butte, MT 59702
Permit No. 50

I wish to support the mission of the Big Hole River Foundation by becoming a member or making a tax deductible donation.

Please consider a fully tax deductible life membership gift to the Big Hole River Foundation

Please enroll me at the following level:

- ☐ Free Flows (\$25)
- ☐ Maiden Rock (\$50)
- ☐ Wise River (\$75)
- ☐ Pintler (\$100)
- ☐ Grayling (\$250)
- ☐ Life Member (\$500)
- ☐ Memorial Donation (include information)
- ☐ Cash Donation
- ☐ Merchandise Donation

Name:
Address:
City, State, Zip:
Phone:
Email Address:
Enclose check or credit card # & Expiration Date:

To order by phone please call us at 1.866.533.2473. To order on-line, please visit us at www.bhrf.org or mail this form to BHRF, P.O. Box 3894, Butte, MT 59702.